

**Accessibility Update
The 2015 Building Code of NY State
Niagara Frontier Building Officials
January 24, 2018
49-6936**



2015 BCNYS Accessibility and Usability for Commercial Buildings



Dominic Marinelli
VP Accessibility Services
United Spinal Association
dmarinelli@accessibility-services.com
www.accessibility-services.com
718.803.3782 Ext. 7502



- Private, National Not for Profit Organization
- Established in 1946 as *Eastern Paralyzed Veterans Association*
- Most members have a spinal cord injury or disease
- Name changed in January, 2004 to United Spinal Association

Headquarters:

Kew Gardens, NY

Regional Offices: Philadelphia, Buffalo, Naples, FL & Washington DC

www.unitedspinal.org

2015 BCNYS Accessibility and Usability for Commercial Buildings



- Accessibility Training Programs
- Plan Review Services
- Consulting
- Site Assessments & Reporting
- 3rd Party Inspectors

www.accessibility-services.com

Goal

- . . . determine the minimum requirements for accessibility.
- 2015 International Building Code.
- 2009 ICC A117.1 Accessible and Usable Buildings and Facilities.



This seminar primarily addresses accessibility in commercial buildings. Residential type facilities covered in this class is limited to the facilities that are not permanent residences. There are types of facilities that may have some overlap, such as dormitories, assisted living facilities and nursing homes.

2015 BCNYS Accessibility and Usability for Commercial Buildings

Accessibility Code

Technical requirements for accessibility are based on the 2010 ADA Standards for Accessible Design



2015 BCNYS Accessibility and Usability for Commercial Buildings

Graphic Conventions

- Drawings presented today, and in the workbook, use the following graphic conventions for showing dimensions on figures. All dimensions are shown in inches above the measure line with the metric equivalent below.

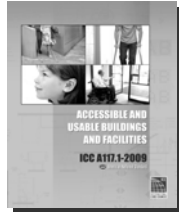
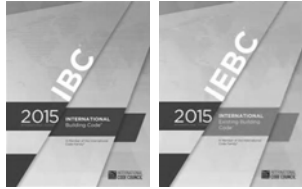
Convention	Description
	Typical dimension line showing U.S. customary units (in inches) above the line and SI units (in millimeters) below
	Dimensions for short distances indicated on extended line
	Dimension line showing alternate dimensions rounded
	Direction of approach
	Minimum
	Boundary of clear floor area
	Centerline

2015 BCNYS Accessibility and Usability for Commercial Buildings

2015 Building Code of New York State

Scoping Requirements:
 "What, Where & How Many"
 *Chapter 11 & Appendix E

Technical Requirements:
 "How"
 ICC/ANSI A117.1-2009



2015 BCNYS Accessibility and Usability for Commercial Buildings

7

Chapter 3 Building Blocks



2009 A117.1

Indicates a change, relocation, addition or modification from the ICC ANSI A117.1 - 2003 edition

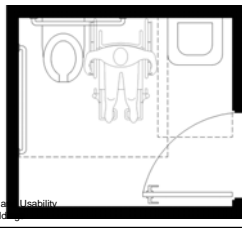
Special thanks to ICC for developing the "Significant Changes to the ICC ANSI A117.1 Standard – 2009 edition" as this is a comprehensive resource for code officials.

301.2 Overlap of Clearances at Doors, Fixtures, Appliances and Elements

301.2 Overlap. Unless otherwise specified, clear floor spaces, clearances at fixtures, maneuvering clearances at doors, and turning spaces shall be permitted to overlap

Eliminates redundancy in other areas of the standard (kitchens, toilet and bathing rooms, Type A & Type B units)

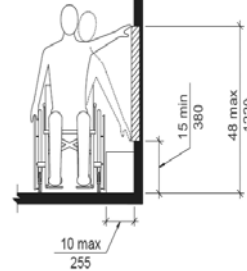
2009 A117.1



2015 BCNYS Accessibility and Usability for Commercial Buildings

A117.1 308.3.1 Unobstructed Side Reach

2009 A117.1



***EXCEPTION: Existing elements that are not altered shall be permitted at 54 inches maximum above the floor**

10

ANSI A117.1 308.3.2 Obstructed High Side Reach

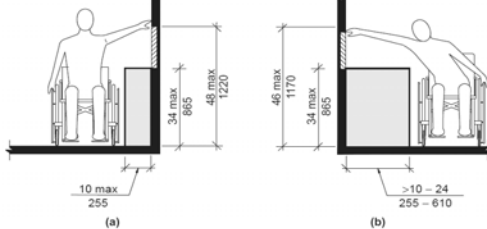


FIG. 308.3.2 OBSTRUCTED HIGH SIDE REACH

***EXCEPTION: At washing machines and clothes dryers, the height of the obstruction shall be permitted to be 36 inches (915 mm) maximum above the floor.**

2009 A117.1

2015 BCNYS Accessibility and Usability for Commercial Buildings

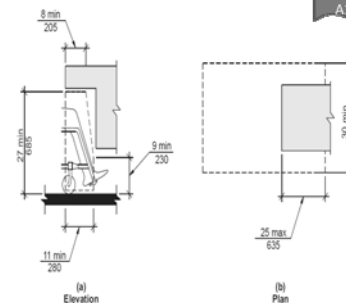
11

ANSI A117.1 Knee Clearance 306.3

2009 A117.1

306.1 General. Where space beneath an element is included as part of clear floor space at an element, clearance at an element, or a turning space, the space shall comply with Section 306.

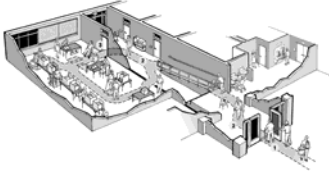
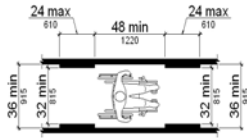
Additional space shall not be prohibited beneath an element, but shall not be considered as part of the clear floor space or turning space.



2015 BCNYS Accessibility and Usability for Commercial Buildings

2015 BCNYS Accessibility and Usability for Commercial Buildings

Chapter 4 Accessible Routes



2015 BCNYS Accessibility and Usability for Commercial Buildings

13

Exterior Accessible Route

- Exterior Accessible Routes
 - Locations and Elements
- Accessible Parking Spaces
 - Locations and Elements
 - Passenger Loading Zones
- Curb Ramps
 - Location and Access
- Signage.



2015 BCNYS Accessibility and Usability for Commercial Buildings

14

Site Access



2015 BCNYS Accessibility and Usability for Commercial Buildings

15

Parking Locations



2015 BCNYS Accessibility and Usability for Commercial Buildings

16

Dispersion by Type



2015 BCNYS Accessibility and Usability for Commercial Buildings

17

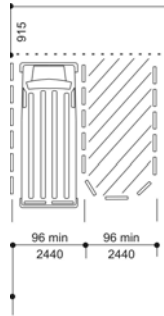
Number Required

- Based on number provided.
- Number required per zoning laws.
- Table 1106.1 for general parking.
- 2% for Group R-2 and R-3.
- 10% at hospitals facilities.
- 20% at mobility treatment centers.

2015 BCNYS Accessibility and Usability for Commercial Buildings

18

All Van All The Time



2015 BCNYS Accessibility and Usability for Commercial Buildings

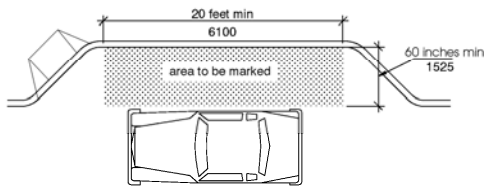
Passenger Loading Zones

- Group I-1 and I-2
- Valet parking
- Where provided, they must be accessible

2015 BCNYS Accessibility and Usability for Commercial Buildings

20

Passenger Loading Zones



For SI: 1 inch = 25.4 mm.

2015 BCNYS Accessibility and Usability for Commercial Buildings

21

2015 BCNYS General Exceptions Change to coordinate with the 2010 ADA Standards

1103.2.2 Employee work areas. Spaces and elements within employee work areas shall only be required to comply with Sections 907.9.1.2, 1007 and 1104.3.1 and shall be designed and constructed so that individuals with disabilities can approach, enter and exit the work area.

Work areas, or portions of work areas, other than raised courtroom stations, that are less than 300 square feet in area and located 7 inches or more above or below the ground or finish floor where the change in elevation is essential to the function of the space shall be exempt from all requirements.

Clarifies that an employee work area that is required to be lower than the floor, such as a service pit in a garage, is not required to meet the approach, enter and exit requirements.

2015 BCNYS Accessibility and Usability for Commercial Buildings

22

1104.4 Multilevel buildings and facilities.

At least one accessible route shall connect each accessible level, including mezzanines, in multistory buildings and facilities.

Exceptions:

1. An *accessible route* is not required to stories and *mezzanines* that have an aggregate area of not more than 3,000 square feet (278.7 m²) and are located above and below *accessible* levels. This exception shall not apply to:
 - 1.1. Multiple tenant facilities of Group M occupancies containing five or more tenant spaces;
 - 1.2. Levels containing offices of health care providers (Group B or I); or
 - 1.3. Passenger transportation facilities and airports (Group A-3 or B).

1104.4 Multilevel buildings and facilities - Exceptions

2. Levels that do not contain *accessible* elements or other spaces as determined by Section 1107 or 1108 are not required to be served by an *accessible route* from an *accessible* level.
3. In air traffic control towers, an *accessible route* is not required to serve the cab and the floor immediately below the cab.
4. Where a two-story building or facility has one story with an occupant load of five or fewer persons that does not contain public use space, that story shall not be required to be connected by an accessible route to the story above or below.

2015 BCNYS Accessibility and Usability for Commercial Buildings

24

This “elevator exception” does not apply to (same as the ADA):

- Levels that contain offices of health care providers
- Transportation facilities
- Multi-tenant mercantile facilities

1104.5 Location

- Accessible routes shall coincide with or be located in the same area as a general circulation path.
- Where the circulation path is interior, the accessible route shall also be interior.
- Where only one accessible route is provided, the accessible route shall not pass through kitchens, storage rooms, restrooms, closets or similar spaces.

1104.5 Exceptions

1. Accessible routes from parking garages contained within and serving Type B dwelling units are not required to be interior.
2. A single accessible route is permitted to pass through a kitchen or storage room in an Accessible, Type A or Type B dwelling unit.

2010 ADA Standards- 206.2.3 Multi-Story Buildings & Facilities – Accessible Routes

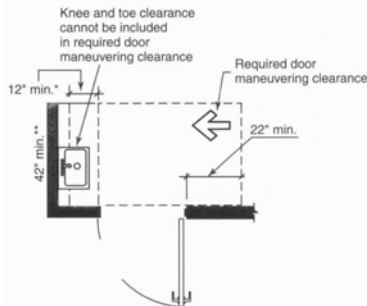
At least one accessible route shall connect each story and mezzanine in multi-story buildings and facilities.

Exceptions:

- *Private* facilities < 3 stories or < 3000 sq. ft./ story
- *Public* facilities (2 story) - if 1 story not open to public, occupancy of 5 or fewer

ANSI A117.1 404.2.3 Maneuvering Clearances.

Minimum maneuvering clearances at doors shall comply with Section 404.2.3 and shall include the full clear opening width of the doorway. Required door maneuvering clearances shall not include knee and toe clearance.




* If both closer and latch are provided
 ** 48" min. (1220) if both closer and latch provided

(e) Hinge Approach, Push Side


Maneuvering Clearances




- clearance applies to full height (80" min.)
- No changes in level (other than thresholds)



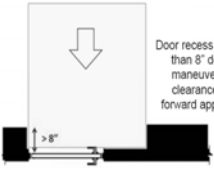
Accessible Routes - Doors



Recess: 8" max.



Recess: greater than 8"



Door recess greater than 8" deep; maneuvering clearance for forward approach

> 8"

2015 BCNYS Accessibility and Usability for Commercial Buildings 31


Door Surface 404.2.9

Bottom 10" must be smooth (full width of door)

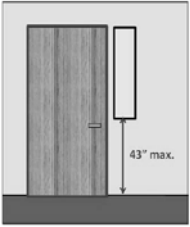


Kick plates can be used to protect door

2015 BCNYS Accessibility and Usability for Commercial Buildings 32




Vision Lights 404.2.10



43" max.

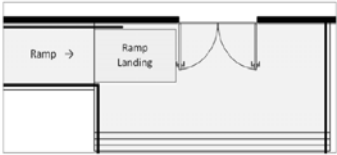
If provided, vision lights: 43" max. AFF (not required if bottom edge is above 66")

2015 BCNYS Accessibility and Usability for Commercial Buildings 33



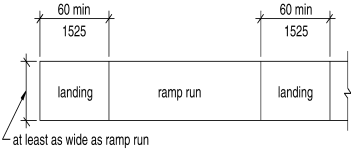
Landings

Maneuvering clearance and ramp landings can overlap
Tip: Locate doors outside ramp landings to prevent hazards



2015 BCNYS Accessibility and Usability for Commercial Buildings 34

A117.1 405.7 Ramp Landings

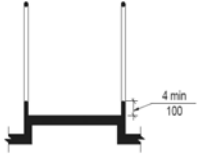


at least as wide as ramp run

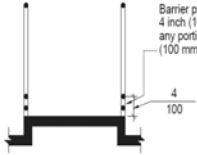
- Minimum clear width 36 inches between handrails
- Maximum slope 1:12 (8.33%) New Construction
- Maximum rise for any ramp run is 30 inches
- Cross slope may not exceed 1:48 (2%)
- Ramp runs with a rise greater than 6 inches shall have handrails on both sides.

2015 BCNYS Accessibility and Usability for Commercial Buildings 35

ANSI A117.1 405.9.2 Curb or Barrier Edge Protection



Curb (a)



Barrier (b)

Barrier prevents passage of 4 inch (100 mm) sphere with any portion within 4 inch (100 mm) of floor.

4 min 100

4 100

FIG. 405.9.2
RAMP EDGE PROTECTION

2009
A117.1

2015 BCNYS Accessibility and Usability for Commercial Buildings 36

405.9 Edge Protection. Edge protection complying with Section 405.9.1 or 405.9.2 shall be provided on each side of ramp runs and at each side of ramp landings. *EXCEPTIONS:

1. Edge protection shall not be required on ramps not required to have handrails and that have flared sides complying with Section 406.3.
2. Edge protection shall not be required on the sides of ramp landings serving an adjoining ramp run or stairway.
3. Edge protection shall not be required on the sides of ramp landings having a vertical dropoff of 1/2 inch (13 mm) maximum within 10 inches (255 mm) horizontally of the minimum landing area specified in Section 405.7.
4. Edge protection shall not be required on the sides of ramped aisles where the ramps provide access to the adjacent seats and aisle access ways.

2015 BCNYS Accessibility and Usability for Commercial Buildings

Curb Ramps
Required wherever an accessible route crosses a curb

A117.1 406.3 Sides of Curb Ramps

406.3.2 Marking. If curbs adjacent to the ramp flares are painted, the painted surface shall extend along the flared portion of the curb.

2015 BCNYS Accessibility and Usability for Commercial Buildings

2015 BCNYS Elevators 2012 IBC

1109.6.7 Elevators. Passenger elevators on an accessible route shall be accessible and comply with Section 309.3 Chapter 30.

2015 BCNYS Accessibility and Usability for Commercial Buildings

ANSI A117.1 Elevators

407.2.1.5 Signals

Call buttons shall have visible signals to indicate when each call is registered and when each call is answered. Call buttons shall provide an audible signal or mechanical motion of the button to indicate when each call is registered.

2015 BCNYS Accessibility and Usability for Commercial Buildings

ANSI A117.1 Elevators

407.4.6.1 Location. Controls shall be located within one of the reach ranges specified in Section 308.

EXCEPTIONS:
1. Where the elevator panel complies with Section 407.4.8.

407.4.8 Elevator Car Call Sequential Step Scanning. Elevator car call sequential step scanning shall be provided where car control buttons are provided more than 48 inches (1220 mm) above the floor.

Floor selection shall be accomplished by applying momentary or constant pressure to the up or down scan button.

2015 BCNYS Accessibility and Usability for Commercial Buildings

ANSI A117.1 408 Limited-Use/Limited Application Elevators

ASME A17.1, ANSI and the BCNYS recognize this new type of low-rise elevator.

Its application is "limited" only by the restriction of the ASME code: 18 s.f. maximum car size, 25 foot maximum travel distance, 30 ft/min travel speed.

Important!

LU/LAs are “limited” by the restrictions of ASME A17.1 and not any scoping provisions in the BCNYS.

The 2010 ADA Standards for Accessible Design only permit LU/LA’s in existing construction and to those spaces where lifts are permitted to travel in new construction

(e.g., stages/performing areas, wheelchair viewing locations in places of assembly, incidental occupiable spaces, etc.)

ASME A17.1 LU/LA Requirements

- 18 sf maximum car size
- 30 ft. per min. speed
- 25 ft. travel distance
- Loading per passenger elevator requirements
- No pit or overhead car clearance required in existing buildings

2009
A117.1

ANSI A117.1 LULA

408.4.1 Inside Dimensions. (LULA) Elevator cars shall provide a clear floor width of 42 inches minimum.

The clear floor area shall not be less than 15.75 square feet (1.46 m²).
EXCEPTION: For installations in existing buildings, elevator cars that provide a clear floor area of 15 square feet (1.4 m²) minimum, and provide a clear inside dimension of 36 inches minimum in width and 54 minimum in depth, shall be permitted. This exception shall not apply to cars with doors on adjacent sides.

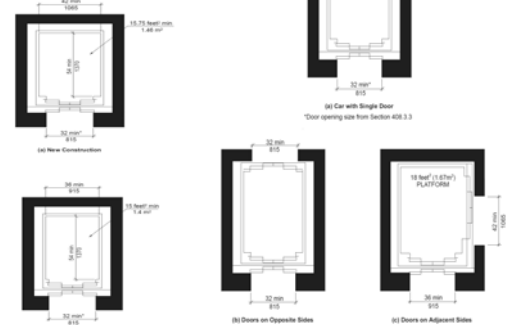
408.3.3 Door Location and Width (LULA)
Car doors shall comply with Section 408.3.3.

408.3.3.1 Cars with Single Door or Doors on Opposite Ends. Car doors shall be positioned at the narrow end of cars with a single door and on cars with doors on opposite ends. Doors shall provide a clear opening width of 36 inches minimum.

408.3.3.2 Cars with Doors on Adjacent Sides. Car doors shall be permitted to be located on adjacent sides of cars that provide an 18 square foot (1.67 m²) platform. Doors located on the narrow end of cars shall provide a clear opening width of 36 inches minimum. Doors located on the long side shall provide a clear opening width of 42 inches minimum and be located as far as practicable from the door on the narrow end.

LULA 408.3.3 & 408.4.1

2009
A117.1



Platform Lifts

Section 1109.8 IBC Platform (wheelchair) lifts are permitted to be a part of a required accessible route in new construction where indicated in Items 1 through 10. Platform (wheelchair) lifts shall be installed in accordance with ASME A18.1

1. An accessible route to a performing area and speakers’ platforms in occupancies in Group A.
2. An accessible route to wheelchair spaces required by Section 1108.2.2 through 1108.2.6
3. An accessible route to spaces that are not open to the general public with an occupant load of not more than five.
4. An accessible route within a dwelling or sleeping unit.
5. An accessible route to wheelchair seating spaces located in outdoor dining terraces in A-5 occupancies where the means of egress from the dining terraces to a public way is open to the outdoors.

6. An accessible route to raised judges’ benches, clerks’ stations, jury boxes, witness stands and other raised or depressed areas in a court.
7. An accessible route to load and unload areas serving amusement rides.
8. An accessible route to play components or soft contained play structures.
9. An accessible route to team or player seating areas serving areas of sport activity.
10. An accessible route where existing exterior site constraints make use of a ramp or elevator infeasible.

Technical Requirements for Platform Lifts (ASME A18.1) & 410 of ANSI A117.1 – 2009/2010 ADA Standards

- Floor penetration now permitted per ASME A18.1a 2001**
- 14 ft. 1 inch maximum travel distance
- 18 sf maximum platform size



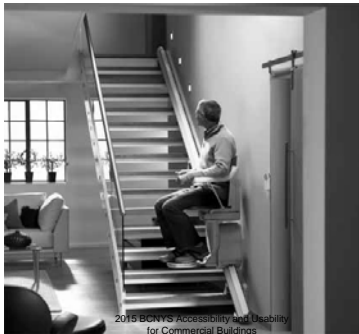
2015 BCNYS Accessibility and Usability for Commercial Buildings

49

Inclined Platform Lift & Vertical Platform Lift



Stairway Chair Lift (not permitted on required accessible routes)



2015 BCNYS Accessibility and Usability for Commercial Buildings

51

ANSI A117.1 410.2.1 Doors and Gates

2009 A117.1

Doors and gates shall be low energy power operated doors or gates complying with Section 404.3. Doors shall remain open for 20 seconds minimum. On lifts with one door or with doors on opposite ends, the end door clear opening width shall be 32 inches minimum. On lifts with one door on a narrow end and one door on a long side, the end door clear opening width shall be 36 inches minimum. Side door clear opening width shall be 42 inches minimum.

Where a door is provided on a long side and on a narrow end of a lift, the side door shall be located with either the strike side or the hinge side in the corner furthest from the door on the narrow end.

EXCEPTIONS:

1. Doors or gates shall be permitted to be of the self-closing, manual type, where that door or gate provides access to a narrow end of the platform that serves only one landing. This exception shall not apply to doors or gates with ramps.
2. Lifts serving two landings maximum and having doors or gates on adjacent sides shall be permitted to have self closing manual doors or gates provided that the side door or gate is located with the strike side furthest from the end door. This exception shall not apply to door or gates with ramps.

410.2.2 Ramps. Ramp widths shall not be less than the platform opening they serve.

2015 BCNYS Accessibility and Usability for Commercial Buildings

52

410.2.1 Platform Lift Doors & Gates

2009 A117.1

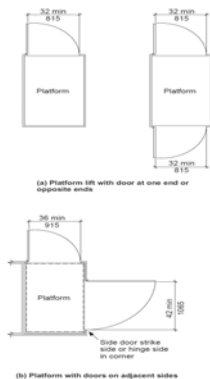


FIG. 410.2.1 PLATFORM LIFT DOORS AND GATES

2015 BCNYS Accessibility and Usability for Commercial Buildings

--

ANSI A117.1 Lift Entry and Clear Floor Space at Ramps 410.2 & 410.5

410.5 Clear Floor Space. Clear floor space of platform lifts shall comply with Section 410.5. **410.5.1 Lifts with Single Door or Doors on Opposite Ends.** Platform lifts with a single door or with doors on opposite ends shall provide a clear floor width of 36 inches minimum and a clear floor depth of 48 inches minimum.

410.5.2 Lifts with Doors on Adjacent Sides. Platform lifts with doors on adjacent sides shall provide a clear floor width of 42 inches minimum and a clear floor depth of 60 inches minimum.

EXCEPTION: In existing buildings, platform lifts with doors on adjacent sides shall be permitted to provide a clear floor width of 36 inches and a clear floor depth of 60 inches.

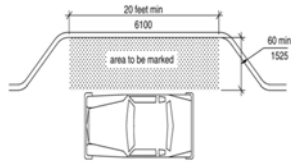
These changes address maneuvering and functioning within lifts that have doors on adjacent sides. They also address lift doors or gates with ramps.

2009 A117.1

2015 BCNYS Accessibility and Usability for Commercial Buildings

54

Chapter 5 General Site & Building Elements



No major changes



2015 BCNYS Accessibility and Usability
for Commercial Buildings

55

2015 BCNYS – Accessible Parking Scoping Terminology Change

1106.3 Hospital outpatient facilities.

At least 10 percent, but not less than one, of patient care recipient and visitor parking spaces provided to serve hospital outpatient facilities shall be *accessible*.

1106.4 Rehabilitation facilities and outpatient physical therapy facilities.

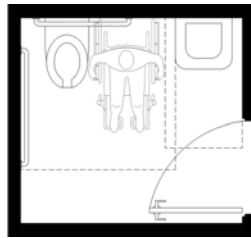
At least 20 percent, but not less than one, of the portion of patient care recipient and visitor parking spaces serving rehabilitation facilities specializing in treating conditions that affect mobility and outpatient physical therapy facilities shall be *accessible*.

2015 BCNYS Accessibility and Usability
for Commercial Buildings

56

Chapter 6

Plumbing Elements



2015 BCNYS Accessibility and Usability
for Commercial Buildings

57

2015 BCNYS 1109.2 Toilet & Bathing Facilities

1109.2 Toilet and bathing facilities

New Exceptions below added:

5. Toilet rooms or bathing rooms that are parts of critical care or intensive care patient sleeping rooms serving *Accessible units* are not required to be *accessible*.

6. Toilet rooms or bathing rooms designed for bariatrics patients are not required to comply with the toilet room and bathing room requirement in ICC A117.1. The *sleeping units* served by bariatrics toilet or bathing rooms shall not count toward the required number of *Accessible sleeping units*

7. Where toilet facilities are primarily for children's use, required *accessible* water closets, toilet compartments and lavatories shall be permitted to comply with the children's provisions of ICC A117.1.

2015 BCNYS Accessibility and Usability
for Commercial Buildings

58

2015 BCNYS Drinking Fountains

1109.5.1 Minimum number Exceptions:

1. No change
2. Where drinking fountains are primarily for children's use, drinking fountains for people using wheelchairs shall be permitted to comply with the children's provisions in ICC A117.1 and drinking fountains for standing children shall be permitted to provide the spout at 30 inches (762 mm) minimum above the floor.

- *New Exception Added*

2015 BCNYS Accessibility and Usability
for Commercial Buildings

59

2015 IBC Drinking Fountains

1109.5.2 More than the minimum number

Exceptions:

1. No change
2. Where drinking fountains are primarily for children's use, drinking fountains for people using wheelchairs shall be permitted to comply with the children's provisions in ICC A117.1 and drinking fountains for standing children shall be permitted to provide the spout at 30 inches (762 mm) minimum above the floor.

- *New Exception Added*

2015 BCNYS Accessibility and Usability
for Commercial Buildings

60

Drinking Fountains

2015 IBC 1109.5 Drinking fountains.

Where drinking fountains are provided on an exterior site, on a floor or within a secured area, the drinking fountains shall be provided in accordance with Section 1109.5.1 and 1109.5.2.

1109.5.1 Minimum Number

No fewer than two drinking fountains shall be provided. One drinking fountain shall comply with the requirements for people who use a wheelchair and one drinking fountain shall comply with the requirements for standing persons.

Exception: A single drinking fountain that complies with the requirements for people who use a wheelchair and standing persons shall be permitted to be substituted for two separate drinking fountains.

1109.5.2 More than the minimum number

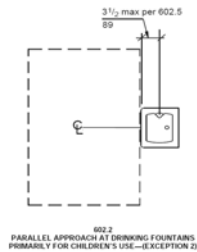
- Where more than the minimum number of drinking fountains specified in Section 1109.5.1 are provided, 50 percent of the total number of drinking fountains provided shall comply with the requirements for persons who use a wheelchair and 50 percent of the total number of drinking fountains provided shall comply with the requirements for standing persons.



2015 BCNYS Accessibility and Usability for Commercial Buildings

ANSI A117.1 602.2 Drinking Fountain Clear Floor Space

- Parallel approach to fountains only permitted at fountains primarily for children's use when the spout is 30 inches maximum and a parallel approach is provided and the clear floor space is centered on the drinking fountain & fountains for standing persons.

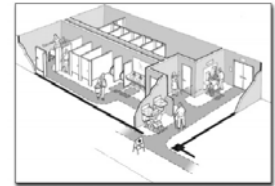


602.2 PARALLEL APPROACH AT DRINKING FOUNTAINS, PRIMARILY FOR CHILDREN'S USE--(EXCEPTION 2)

2009 A117.1

ANSI A117.1 603.2 Clearances in Toilet & Bathing Rooms

- Clarification that the turning space required within the toilet room may not only be provided within a compartment. Accessible turning space required to be provided within the room



2009 A117.1

ANSI A117.1 603.3 Mirrors

- 603.3 Mirrors.** Where mirrors are located above lavatories, a mirror shall be located over the accessible lavatory and shall be mounted with the bottom edge of the reflecting surface 40 inches maximum above the floor. Where mirrors are located above counters that do not contain lavatories, the mirror shall be mounted with the bottom edge of the reflecting surface 40 inches (1015 mm) maximum above the floor.
- EXCEPTION:** Other than within Accessible dwelling or sleeping units, mirrors are not required over the lavatories or counters if a mirror is located within the same toilet or bathing room and mounted with the bottom edge of the reflecting surface 35 inches maximum above the floor.

ANSI A117.1 603.5 Diaper Changing Tables

- 603.5 Diaper Changing Tables.** Diaper changing tables shall comply with Sections 309 and 902



2009 A117.1

ANSI A117.1 603.6 Operable Parts

2009
A117.1

Operable parts on towel dispensers and hand dryers serving accessible lavatories shall comply with Table 603.6.

Requirements were relocated to 603.6 – note that reach depth over an obstruction is limited.

TABLE 603.6
MAXIMUM REACH DEPTH AND HEIGHT

Maximum Reach Depth	0.5 inch (13 mm)	2 inches (51 mm)	5 inches (125 mm)	6 inches (150 mm)	9 inches (230 mm)	11 inches (280 mm)
Maximum Reach Height	48 inches (1220 mm)	46 inches (1170 mm)	42 inches (1065 mm)	40 inches (1015 mm)	36 inches (915 mm)	34 inches (865 mm)



2015 BCNYS Accessibility and Usability for Commercial Buildings

67

ANSI A117.1 604.5, 607.4 Grab bar blocking and swing up grab bar requirements

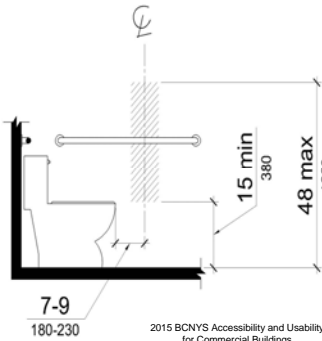
2009
A117.1

- Change is a relocation of blocking requirements for various dwelling units to Chapter 10.

2015 BCNYS Accessibility and Usability for Commercial Buildings

68

A117.1 2003- Water Closets (604.7) & 2010 ADA Standards



Location for toilet paper dispenser

2015 BCNYS Accessibility and Usability for Commercial Buildings

69

ANSI A117.1 604.7

2009
A117.1

Revised location for toilet paper dispenser

-Toilet paper dispensers shall comply with Section 309.4.

-Where the dispenser is located above the grab bar, the outlet of the dispenser shall be located within an area 24 inches minimum and 36 inches maximum from the rear wall.

-Where the dispenser is located below the grab bar, the outlet of the dispenser shall be located within an area 24 inches minimum and 42 inches maximum from the rear wall.

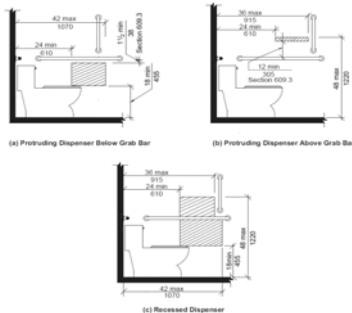
-The outlet of the dispenser shall be located 18 inches minimum and 48 inches maximum above the floor. Dispensers shall comply with Section 609.3. Dispensers shall not be of a type that control delivery, or do not allow continuous paper flow.

2015 BCNYS Accessibility and Usability for Commercial Buildings

70

ANSI A117.1 604.7 Revised location for toilet paper dispenser

2009
A117.1



Note: For additional dimensions, see Fig. 604.7.2 Proposed revised location.

2015 BCNYS Accessibility and Usability for Commercial Buildings

71

ANSI A117.1 - 609 Grab Bars

2009
A117.1

-12" min. clearance above

-1 1/2" min. below
- New Exception 609.3:

2. Recessed dispensers projecting from the wall 1/4 inch (6.4 mm) maximum measured from the face of the dispenser and complying with Section 604.7 shall be permitted within the 12-inch (305 mm) space above and the 1 1/2 inch (38 mm) spaces below and at the of the grab bar.

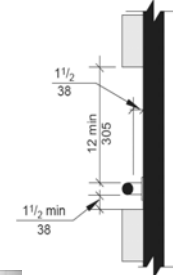


FIG. 609.3 SPACING OF GRAB BARS



2015 BCNYS Accessibility and Usability for Commercial Buildings

72

A117.1 604.11 Water Closets and Toilet Compartments for Children's Use

FIGURE 604.11.2
CHILDREN'S WATER CLOSET LOCATION

Note: For adult dimensions see Fig. 604.7

FIG. 604.11.7
CHILDREN'S DISPENSER OUTLET LOCATION

Note: For adult dimensions see Fig. 604.4

FIGURE 604.11.4
CHILDREN'S WATER CLOSET HEIGHT

604.11.7 contains requirements for dispensers primarily for children's use

2009
2015 BCNYS Accessibility and Usability
for Commercial Buildings

73

ANSI A117.1 604.9.3.1 Wheelchair Accessible Compartment Door Openings

(a) Front partition

(b) Side wall or partition

2009
A117.1

2015 BCNYS Accessibility and Usability
for Commercial Buildings

ANSI A117.1 604.9.3.1 Door Opening Location.

The farthest edge of toilet compartment door opening shall be located in the front wall or partition or in the side wall or partition as required by Table 604.9.3.1.

Door Opening Location	Measured From	Dimension
Front Wall or Partition	From the side wall or partition closest to the water closet	56 inches (1420 mm) minimum
	From the side wall or partition farthest from the water closet	4 inches (100 mm) maximum
Side Wall or Partition Wall-Hung Water Closet	From the rear wall	52 inches (1320 mm) minimum
	From the front wall or partition	4 inches (100 mm) maximum
Side Wall or Partition Floor-Mounted Water Closet	From the rear wall	55 inches (1395 mm) minimum
	From the front wall or partition	4 inches (100 mm) maximum

2009
A117.1

2015 BCNYS Accessibility and Usability
for Commercial Buildings

75

ANSI A117.1 604.9.3.1 Alternate Door Openings

Door shall not swing into the required minimum area of the compartment.

FIG. 604.9.3.1 (C)
WHEELCHAIR ACCESSIBLE TOILET COMPARTMENT DOOR OPENINGS—ALTERNATE

2009
A117.1

2015 BCNYS Accessibility and Usability
for Commercial Buildings

1109.2.3 Lavatories

Where provided, 5% but not less than one, shall be accessible.

Where the total lavatories provided in a toilet room or bathing facility is 6 or more, at least one lavatory with enhanced reach ranges compliant with A117.1 (606.5) shall be provided.

2009
2015 BCNYS Accessibility and Usability
for Commercial Buildings

76

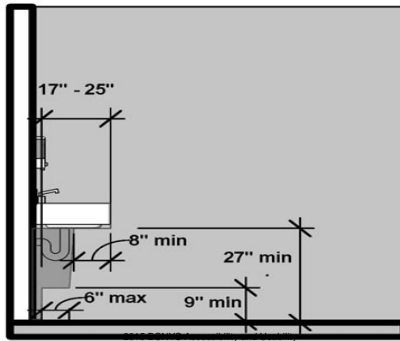
Lavatories

At least one accessible

2009
2015 BCNYS Accessibility and Usability
for Commercial Buildings

77

Knee & Toe Clearance at Lavatory



for Commercial Buildings

79

ANSI A117.1 606.2 Clear Floor Space at Lavatories & Sinks

2009
A117.1

- Change specifies that the clear floor space for a parallel approach to the sink or lavatory (when permitted by 606.2) must be "centered" on the fixture.
- i.e. kitchen sink when there is no cooktop/range; lavatories and sinks for children under 5; wet bars.

2015 BCNYS Accessibility and Usability
for Commercial Buildings

80

1109.3 Sinks



(5% or at least 1 in accessible spaces)
– mop & service sinks exempted

2015 BCNYS Accessibility and Usability
for Commercial Buildings

81

- Sinks in kitchens and kitchenettes require knee clearance for a forward approach – unless there is no cooktop/range in the room.



- Sink height is still 34 inches max. above finish floor.

2015 BCNYS Accessibility and Usability
for Commercial Buildings

82

ANSI A117.1 607.4.1.1 & 607.4.2.1 Grab Bars at Bathtubs

2009
A117.1

- Change specifies that the lower grab bar on the back wall has been modified to permit a range versus a specific height. The control end wall grab bar provisions are modified for consistency.
- **607.4.1.1 Back Wall.** Two horizontal grab bars shall be provided on the back wall, one complying with Section 609.4 and the other located 8 inches minimum and 10 inches maximum above the rim of the bathtub.

2015 BCNYS Accessibility and Usability
for Commercial Buildings

83

ANSI A117.1 607.4.2.1 Back Wall

2009
A117.1

Two horizontal grab bars shall be provided on the back wall, one complying with Section 609.4 and the other located 8 inches minimum and 10 inches maximum above the rim of the bathtub.

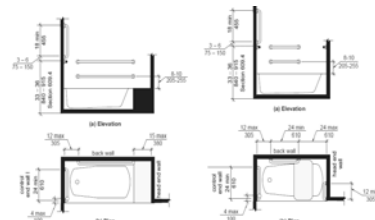


FIG. 607.4.2
GRAB BARS FOR BATHTUBS WITH PERMANENT SEATS FOR BATHTUBS WITHOUT PERMANENT SEATS

84

ANSI A117.1 608.2 Sizes and Clearances for Shower Compartments

2009
A117.1

- Change specifies that Roll In Showers now require seats. Permanent, non-folding seats will be permitted in showers larger than the minimum dimensions. Seat requirements were also moved to each of the individual shower compartment sections.

ANSI A117.1 608.2.2.3 Standard Roll In Type Shower Seat

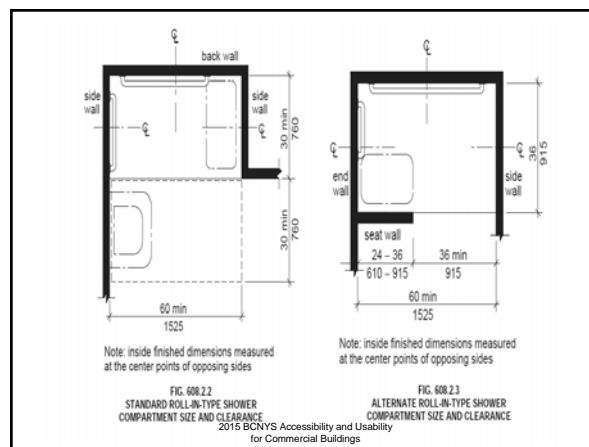
2009
A117.1

A folding seat complying with Section 610 shall be provided on an end wall.

EXCEPTIONS:

- A seat is not required to be installed in a shower for a single occupant accessed only through a private office and not for common use or public use, provided reinforcement has been installed in walls and located so as to permit the installation of a shower seat.
- A fixed seat shall be permitted where the seat does not overlap the minimum clear inside dimension required by Section 608.2.2.1.

- 608.2.2.1 Size.** Standard roll-in-type shower compartments shall have a clear inside dimension of 60 inches minimum in width and 30 inches minimum in depth, measured at the center point of opposing sides. An entry 60 inches minimum in width shall be provided.



ANSI A117.1 608.3.2 Grab Bars for Standard Roll In Showers

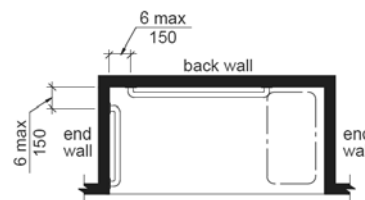
2009
A117.1

Grab bar requirements have been modified since a seat is required by the new standards. Additional details for grab bar locations.

608.3.2 Standard Roll-in-Type Showers. In standard roll-in type showers, a grab bar shall be provided on the back wall beginning at the edge of the seat. The grab bars shall not be provided above the seat. The back wall grab bar shall extend the length of the wall but shall not be required to exceed 48 inches in length. Where a side wall is provided opposite the seat within 72 inches of the seat wall, a grab bar shall be provided on the side wall opposite the seat. The side wall grab bar shall extend the length of the wall but shall not be required to exceed 30 inches in length. Grab bars shall be 6 inches maximum from the adjacent wall.

ANSI A117.1 608.3.2 Grab Bars in Standard Roll In Showers

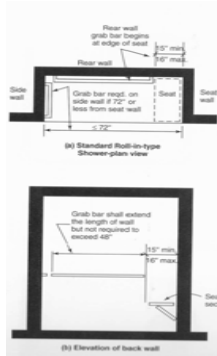
2009
A117.1



With Seat
FIG. 608.3.2
GRAB BARS IN STANDARD ROLL-IN-TYPE SHOWERS

**ANSI A117.1
608.3.2
Grab Bars in
Standard Roll In
Showers**

2009
A117.1



2015 BCNYS Accessibility and Usability
for Commercial Buildings

ANSI A117.1 608.4.1 Controls & Hand Showers for Transfer Type Showers

The controls are located toward the opening of the shower.
(Will ensure that controls are reachable from outside the compartment).

2009
A117.1

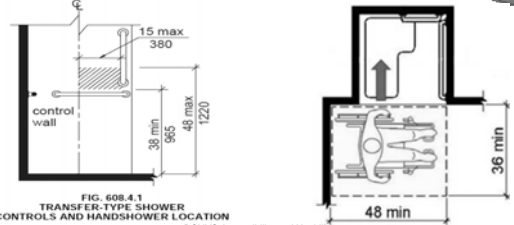


FIG. 608.4.1
TRANSFER-TYPE SHOWER
CONTROLS AND HANDSHOWER LOCATION

2015 BCNYS Accessibility and Usability
for Commercial Buildings

**ANSI A117.1 608.6
Shower Compartments Thresholds**

Allowed:

- 1/2" max. beveled threshold in roll-in showers
- a higher curb (2" max.) - transfer showers in existing facilities (where floor slab affected)

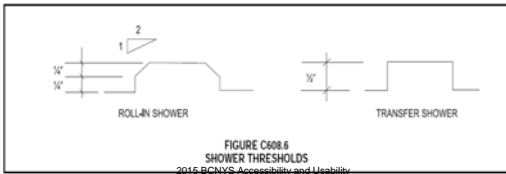


FIGURE C608.6
SHOWER THRESHOLDS

2015 BCNYS Accessibility and Usability
for Commercial Buildings

ANSI A117.1 608.4.2 Controls & Hand Showers for Standard Roll In Showers

- Change reflects new requirement for seats that impacts the control location.

2009
A117.1

608.4.2 Standard Roll-in Showers. In standard roll in showers, the controls and hand shower shall be located on the back wall above the grab bar, 48 inches maximum above the shower floor and 16 inches minimum and 27 inches maximum from the end wall behind the seat.

2015 BCNYS Accessibility and Usability
for Commercial Buildings

ANSI A117.1 608.4.2 Control & Handshower Location

2009
A117.1

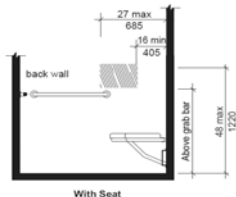


FIG. 608.4.2
STANDARD ROLL-IN-TYPE SHOWER
CONTROL AND HANDSHOWER LOCATION

2015 BCNYS Accessibility and Usability
for Commercial Buildings

Previously controls could go on any wall when there was no seat. Controls must be on the back wall and a minimum of 16 inches from the end wall behind the seat.

ANSI A117.1 608.5 Hand Showers

2009
A117.1

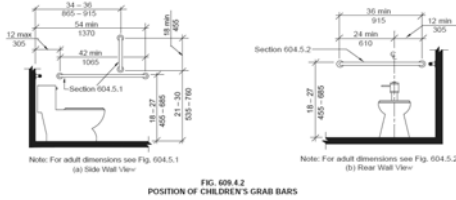
608.5 Hand Showers. A hand shower with a hose 59 inches minimum in length, that can be used both as a fixed shower head and as a hand shower, shall be provided. The hand shower shall have a control with a nonpositive shut-off feature. Where provided, an adjustable-height hand shower mounted on a vertical bar shall be installed so as to not obstruct the use of grab bars.

EXCEPTION: In other than Accessible units and Type A units, a fixed shower head located 48 inches maximum above the shower floor shall be permitted in lieu of a hand shower.

2015 BCNYS Accessibility and Usability
for Commercial Buildings

ANSI A117.1 609.4.2 Position of Children's Grab Bars Clarified

2009
A117.1



2015 BCNYS Accessibility and Usability
for Commercial Buildings

97

Appendix E Laundry Equipment

E105.2 Laundry equipment. Where provided in spaces required to be *accessible*, washing machines and clothes dryers shall comply with this section.

E105.2.1 Washing machines. Where three or fewer washing machines are provided, at least one shall be accessible. Where more than three washing machines are provided, at least two shall be accessible.

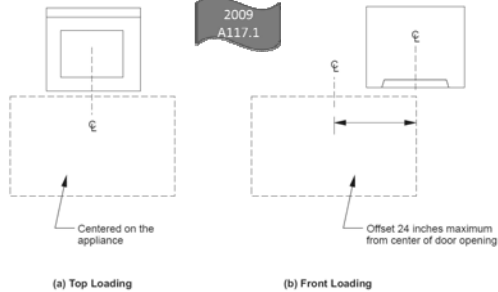
E105.2.2 Clothes dryers. Where three or fewer clothes dryers are provided, at least one shall be accessible. Where more than three clothes dryers are provided, at least two shall be accessible.

2015 BCNYS Accessibility and Usability
for Commercial Buildings

98

ANSI A117.1 611.2 Washing Machines and Clothes Dryers

2009
A117.1

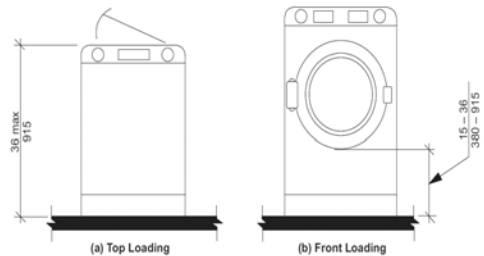


2015 BCNYS Accessibility and Usability
for Commercial Buildings

99

ANSI A117.1 611.2 Washing Machines and Clothes Dryers

2009
A117.1



2015 BCNYS Accessibility and Usability
for Commercial Buildings

2015 BCNYS Saunas & Steam Rooms

1109.6 Saunas and steam rooms. Where provided, saunas and steam rooms shall be *accessible*.

Exception:

Where saunas or steam rooms are clustered at a single location, at least 5 percent of the saunas and steam rooms, but not less than one, of each type in each cluster shall be accessible.

2015 BCNYS Accessibility and Usability
for Commercial Buildings

101

ANSI A117.1 612 Saunas & Steam Rooms

2009
A117.1

New Section Added with technical requirements for saunas and steam rooms.

612.1 General. Saunas and steam rooms shall comply with Section 612.

612.2 Bench. Where seating is provided in saunas and steam rooms, at least one bench shall comply with Section 903. Doors shall not swing into the clear floor space required by Section 903.2.

612.3 Turning space. A turning space complying with Section 304 shall be provided within saunas and steam rooms.

2015 BCNYS Accessibility and Usability
for Commercial Buildings

102

ANSI A117.1 612 Saunas & Steam Rooms

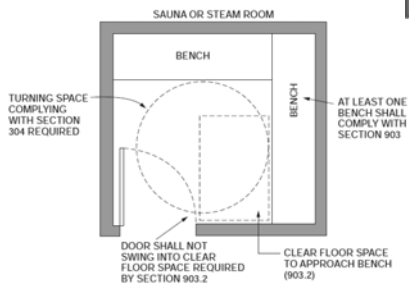


FIGURE C612.1
PLAN OF A SAUNA OR STEAM ROOM
2015 BCNYS Accessibility and Usability
for Commercial Buildings

103

Quick Review of other toilet room requirements....no changes from 2003 to 2009 A117.1.

2015 BCNYS Accessibility and Usability
for Commercial Buildings

104

ANSI A117.1 604.3 Size of Clearance for Water Closet

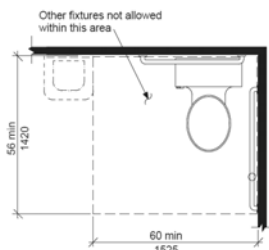


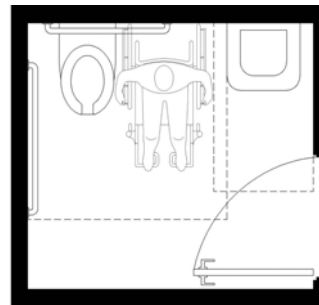
FIG. 604.3
SIZE OF CLEARANCE FOR WATER CLOSET

2015 BCNYS Accessibility and Usability
for Commercial Buildings

105



Toilet & Bathing Rooms ANSI A117.1 603

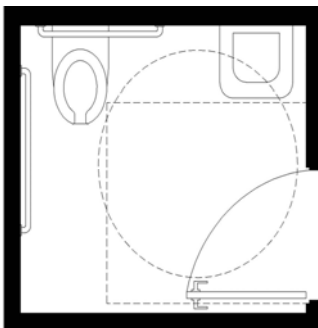


Space for side transfers provided
*remember 60" minimum clearance required from parallel sidewall and leading edge of lavatory

2015 BCNYS Accessibility and Usability
for Commercial Buildings

106

Toilet & Bathing Rooms ANSI A117.1 603



Turning space (which door can swing into) and door clearances further define room size. Door is permitted to swing in if 30" by 48" clear floor space is provided beyond door swing.

2015 BCNYS Accessibility and Usability
for Commercial Buildings

107

A117.1 604.2 Water Closet Location

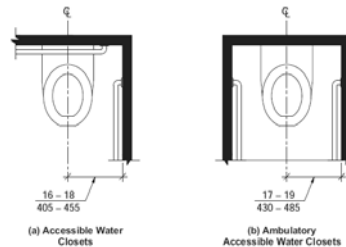
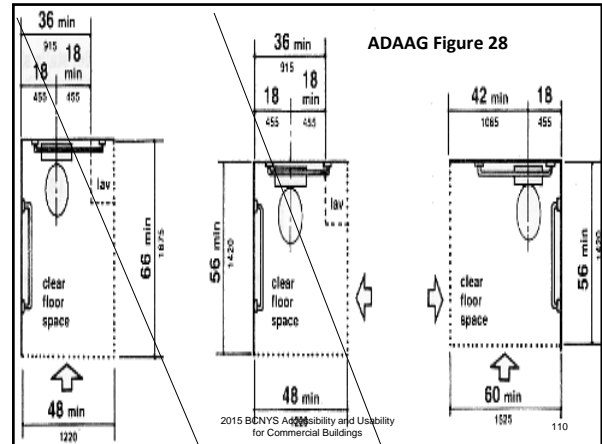
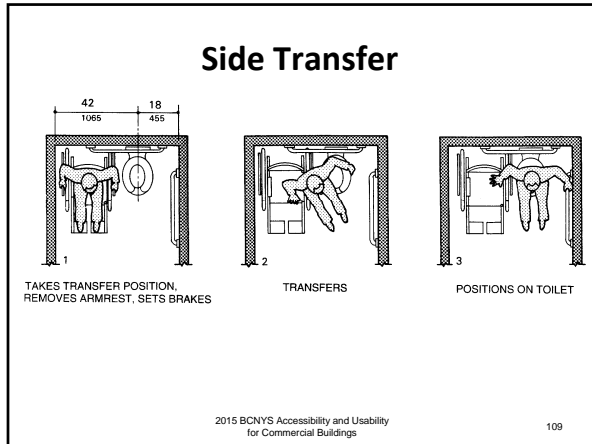


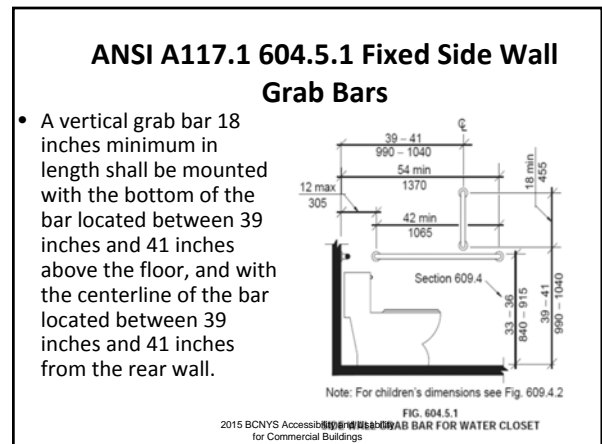
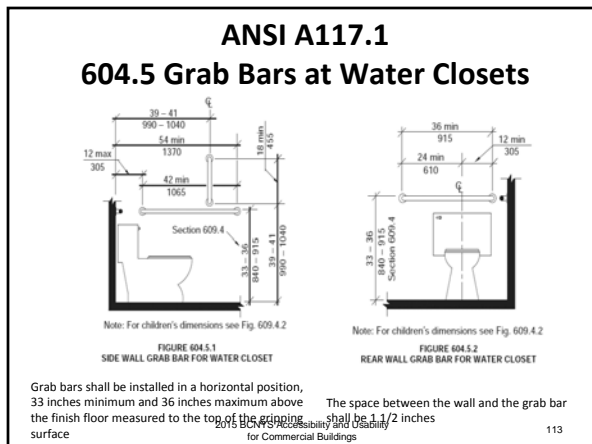
FIGURE 604.2
WATER CLOSET LOCATION


2015 BCNYS Accessibility and Usability
for Commercial Buildings

108



- ### ANSI A117.1 603: Single Occupant Toilet Rooms
- 60" turning space required in the room
 - A door **can** swing over the space where someone sits to use the lavatory, toilet or urinal **provided** a 30" x 48" space is provided past the swing of the door
 - A fixture **cannot** overlap the clear floor space of another fixture
- 2015 BCNYS Accessibility and Usability
for Commercial Buildings
- 111





Rear Grab Bar

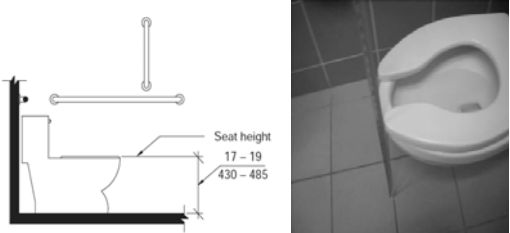


Grab bar can be split or shifted to open side to accommodate required location of flush control valves

2015 BCNYS Accessibility and Usability
for Commercial Buildings

115

Height of Water Closet



Note: For children's dimensions see Fig. 604.11.4

FIGURE 604.4
WATER CLOSET SEAT HEIGHT

2015 BCNYS Accessibility and Usability
for Commercial Buildings

116

Family or assisted use toilet and bathing rooms – 1109.2.1

- Required in mercantile and assembly occupancies
- Provided where an aggregate of 6 or more male and female water closets is required
- Provided in addition to accessible toilet and bathing rooms
- Intended for persons who need assistance from person of opposite sex
- Shall be located not more than one story above or below separate sex toilet rooms. The accessible route from the separate sex toilet room to a family use room shall not exceed 500 feet.

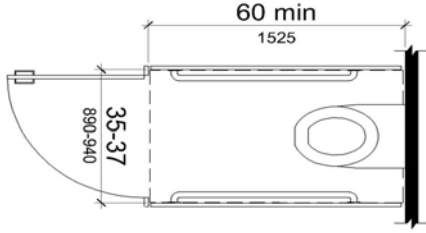
2015 BCNYS Accessibility and Usability
for Commercial Buildings

117

Ambulatory Water Closet Compartments – 1109.2.2

Required where six or more water closets and urinals are provided in a room.

Ambulatory Accessible Stalls ANSI A117.1 604.10




- depth specified (60" minimum)
- width: 35"- 37" permitted by 2010 ADA Standards;
ANSI A117.1 specifies 36" absolute

2015 BCNYS Accessibility and Usability
for Commercial Buildings

119

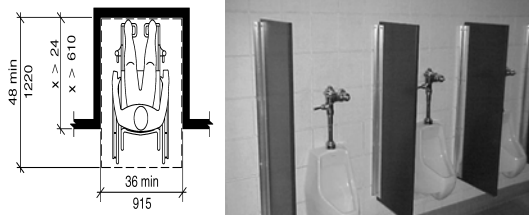
Ambulatory Water Closet Compartment



2015 BCNYS Accessibility and Usability
for Commercial Buildings

120

Urinals – at least one accessible if more than one in a room



Urinals shall be the stall-type or the wall-hung type with the rim 17 inches (430 mm) maximum above the finish floor or ground



Chapter 7

Communication Elements & Features



2015 BCNYS Signs

1111.1 Signs

7. ~~Unisex~~ Family or assisted-use toilet and bathing rooms.

****Required to be identified with the ISA****

2015 BCNYS Signs

1111 Other signs.

6. Within exit enclosures interior exit stairways and ramps, signage shall be provided in accordance with Section 1023.9.

2015 BCNYS Signs

1111.4 Variable message signs.

Where provided in the locations in Sections 1110.4.1 and 1110.4.2, variable message signs (VMS) shall comply with the VMS requirements of ICC A117.1.

1111.4.1 Transportation facilities. Where provided in transportation facilities, variable message signs conveying transportation-related information shall comply with Section 1110.4.

1111.4.2 Emergency shelters. Where provided in buildings that are designated as emergency shelters, variable message signs conveying emergency-related information shall comply with Section 1110.4.

Exception: Where equivalent information is provided in an audible manner, VMS signs are not required to comply with ICC A117.1.

New Section

Added a provision for Variable Message Signs (VMS), which are signs that are on video screens or made up of small lights to form the letters and numbers in a message. They are commonly used to provide information in transportation facilities to indicate gates, times and route information. When provided in transportation facilities or emergency shelters, these signs must meet the new requirements in ICC A117.1 for these types of signs. The text resolution and sizes are based on a 20-200 vision and the distance that a person would be viewing the sign.

Signage Changes to 2009 A117.1



- **703.1 – Scoping added for “type of sign”**
- **703.2.1 – Visual Character Options for Signs**
- **703.2.4; 703.2.8 – Visual Character Height & Line Spacing for Signs** (New Exception added to address the character height and line spacing required in assembly seating areas where the viewing distance to the characters is 100 feet or greater).
- **703.7 – Variable Message Signs** (Entirely new section added to address VMS. Includes technical requirements for VMS such as those found in airports).
- **708.4; 105.2.7 Telephone Entry Systems** – Added a new reference standard for telephone entry systems. Provides a set of requirements and system performance for these systems. Should improve accessibility and consistency of these systems.

Signs E107 BCNYS

Scoping clarified:

- tactile/ visual – labels for permanent rooms & spaces, exit doors
- visual – directional or informational signs
- exempt: temporary signs (7 days or less), building menus, directories, addresses, company names and logos



2015 BCNYS Accessibility and Usability
for Commercial Buildings

E107.2

- E107.2 Designations.**
- Interior and exterior signs identifying permanent rooms and spaces shall be raised characters and Braille. Where pictograms are provided as designations of interior rooms and spaces, the pictograms shall have raised characters and Braille text descriptors
- Revised for consistency with the ICC A117.1, the term "tactile" to indicate when raised letters or Braille signs are required.*

2015 BCNYS Accessibility and Usability
for Commercial Buildings

128

Signs

- Tactile & Visual**
 - "Room 123"
 - "Restroom"
 - "Mechanical Room"
 - "Exit"
 - "Floor B"
 - "Ballroom A"
 - "C. Smith Room"
- Visual Only**
 - "Exit →"
 - "Accounting"
 - "Visitors Must Sign In"
- Exempt**
 - Building directory
 - "Mr. C. Smith, Accountant"

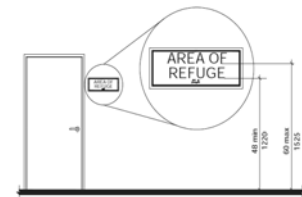


Slide courtesy US
Access Board

2015 BCNYS Accessibility and Usability
for Commercial Buildings

129

ANSI A117.1 703.3.10 Height Above Floor – Raised Characters



Note: For braille character mounting height see Section 703.4.5

FIGURE 703.3.10
HEIGHT OF RAISED CHARACTERS ABOVE FLOOR

2015 BCNYS Accessibility and Usability
for Commercial Buildings

130

Appendix E

- E105.4 Mailboxes.** Where mailboxes are provided in an interior location, at least 5 percent, but not less than one, of each type shall comply with ICC A117.1. In residential and institutional facilities, where mailboxes are provided for each *dwelling unit* or *sleeping unit*, mailboxes complying with ICC A117.1 shall be provided for each unit required to be an *Accessible unit*.
- E105.5 Automatic teller machines and fare machines.** Where automatic teller machines or self-service fare vending, collection or adjustment machines are provided, at least one machine of each type at each location where such machines are provided shall be *accessible*. Where bins are provided for envelopes, wastepaper or other purposes, at least one of each type shall be accessible.



2015 BCNYS Accessibility and Usability
for Commercial Buildings

ANSI A117.1 707 ATMs and Fare Machines

Access to 1 of each type at each location

- speech output
- privacy
- input controls
- display screen
- Braille instructions (for speech mode)



2015 BCNYS Accessibility and Usability
for Commercial Buildings

132

Chapter 8

Special Rooms & Spaces



2015 BCNYS Accessibility and Usability
for Commercial Buildings

Kitchen Clearance 804.2

2009
A117.1

804.2 Clearance. Where a pass-through kitchen is provided, clearances shall comply with Section 804.2.1. Where a U-shaped kitchen is provided, clearances shall comply with Section 804.2.2.

EXCEPTION: Spaces that do not provide a cooktop or conventional range shall not be required to comply with Section 804.2 provided there is a 40-inch (1015 mm) minimum clearance between all opposing base cabinets, counter tops, appliances, or walls within work areas.

2015 BCNYS Accessibility and Usability
for Commercial Buildings

134

Pass Through Kitchen Clearance – ANSI A117.1 804.2.1

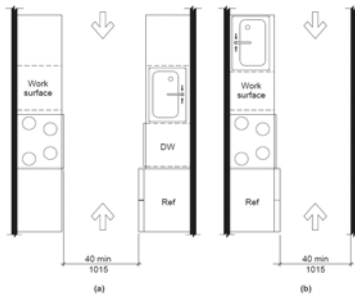


FIG. 804.2.1
2015 BCNYS Accessibility and Usability
for Commercial Buildings

135

U Shaped Kitchen Clearance – ANSI A117.1 804.2.2

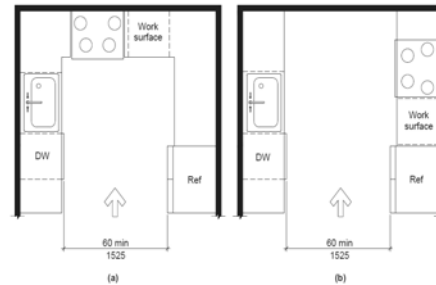


FIG. 804.2.2
U-SHAPED KITCHEN CLEARANCE
2015 BCNYS Accessibility and Usability
for Commercial Buildings

136

804.5 Kitchen Storage

2009
A117.1

- At least 50% of shelf space in cabinets shall comply with Section 905 – Deleted

2015 BCNYS Accessibility and Usability
for Commercial Buildings

137

Cooktops & Ovens 804.5.4, 804.5.5, 1003.12.5.4, 1003.12.5.5, 1004.12.2.3 & 1004.12.2.4

2009
A117.1

- This modification coordinates Chapter 8 cooktop and oven requirements with those in Chapter 10. Separates out cooktop and oven requirements.

2015 BCNYS Accessibility and Usability
for Commercial Buildings

138

ANSI A117.1 805.10 Track Crossings

- Requires detectable warnings any time a track crosses a pedestrian way.

2009
A117.1

805.10 Track Crossings. Where a circulation path crosses tracks, it shall comply with Section 402 and shall have a detectable warning 24 inches in depth complying with Section 705 extending the full width of the circulation path. The detectable warning surface shall be located so that the edge nearest the rail crossing is 6 foot minimum and 15 foot maximum from the centerline of the nearest rail.



FIG. 805.10
2015 BCNYS Accessibility and Usability
for Commercial Buildings

Proposed Public Rights-of-Way Guidelines



- Only required on public streets or sidewalks, not on a building site. Still required on the platform edge at train stations.
- US DOT Design Standards - Curb Ramps at public streets and sidewalks require detectable warnings
- *The 2010 ADA Design Standards do not require detectable warnings at curb ramps*
- 705.3 Platform Edge Detectable Warnings.** PA Uniform Construction Code - **1109.10 Detectable Warnings.** Passenger transit platform edges bordering a drop-off and not protected by platform screens or guards shall have a detectable warning.

2015 BCNYS Accessibility and Usability
for Commercial Buildings

140

Proposed Public Rights-of-Way Guidelines –



R208 Detectable Warning Surfaces

Detectable warning surfaces consist of small truncated domes built in or applied to a walking surface that are detectable underfoot. On pedestrian access routes, detectable warning surfaces indicate the boundary between a pedestrian route and a vehicular route where there is a flush rather than a curbed connection for pedestrians who are blind or have low vision.

Detectable warning surfaces must be provided at the following locations on pedestrian access routes and at transit stops:

- Curb ramps and blended transitions at pedestrian street crossings;
- Pedestrian refuge islands;
- Pedestrian at-grade rail crossings not located within a street or highway;
- Boarding platforms at transit stops for buses and rail vehicles where the edges of the boarding platform are not protected by screens or guards; and
- Boarding and alighting areas at sidewalk or street level transit stops for rail vehicles where the side of the boarding and alighting areas facing the rail vehicles is not protected by screens or guards.

Additional information at <http://www.access-board.gov/nprm.htm#analysis> 141

2015 BCNYS Accessibility and Usability
for Commercial Buildings

141

ANSI A117.1 807

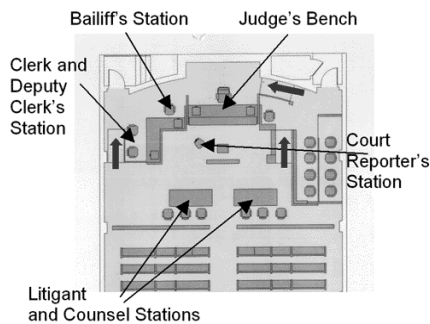
2009
A117.1

- Each courtroom shall comply with 807
- 807.2 - Areas that are raised or depressed shall provide a turning space.
- Levels of jury boxes not required to be accessible are not required to comply with Section 807.2.
- Gallery seating must comply with 802
- Requirements have been coordinated with the 2010 ADA Standards.



2015 BCNYS Accessibility and Usability
for Commercial Buildings

142

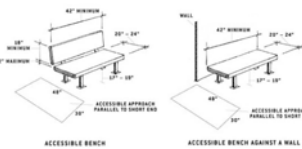


2015 BCNYS Accessibility and Usability
for Commercial Buildings

143

Chapter 9

Built In Furnishings & Equipment



2015 BCNYS Accessibility and Usability
for Commercial Buildings

144

2015 BCNYS Dining and Drinking Areas

1109.2.9 Dining and drinking areas.

In dining and drinking areas, the total floor area allotted for seating and tables all interior and exterior floor areas shall be accessible.

Exceptions:

1. An accessible route between accessible levels and stories above or below is not required where permitted by Section 1104.4, Exception 1.

2. In buildings or facilities not required to provide an accessible route between stories, an accessible route to a mezzanine is not required, provided that the mezzanine contains less than 25 percent of the total area and the same services, decor and amenities are provided in the accessible area.

3. No change ...

4. Employee-only work areas shall comply with Sections 1109.2.3 and 1104.3.1.

Expanded the provisions to include service areas that serve drinks only.

2015 BCNYS Accessibility and Usability
for Commercial Buildings

145

902 Clear Floor Space for Dining & Work Surfaces

2009
A117.1

Two new exceptions for knee/toe clearance underneath small drink counters or furnishings when the element is not designed to function as a table for a forward approach.

902.2 Clear Floor Space. A clear floor space complying with Section 305, positioned for a forward approach, shall be provided. Knee and toe clearance complying with Section 306 shall be provided.

EXCEPTIONS:

1. At drink surfaces 12 inches or less in depth, knee and toe space shall not be required to extend beneath the surface beyond the depth of the drink surface provided.

2. Dining surfaces that are 15 inches minimum and 24 inches maximum in height are permitted to have a clear floor space complying with Section 305 positioned for a parallel approach.

2015 BCNYS Accessibility and Usability
for Commercial Buildings

146

Tables, Counters, Work Surfaces

1109.11 Seating at tables, counters and work surfaces.

Where seating or standing space at fixed or built-in tables, counters or work surfaces is provided in accessible spaces, at least 5 percent of the seating and standing spaces, but not less than one, shall be accessible.

1109.11.1 Dispersion.

Accessible fixed or built-in seating at tables, counters or work surfaces shall be distributed throughout the space or facility containing such elements.

Dining & Work Surfaces – ANSI A117.1 902 5% Scoping

- Clear floor space for forward approach with knee/toe clearance.
- The tops of dining surfaces and work surfaces shall be 28 inches minimum and 34 inches maximum aff.
- *902.5 contains requirements for children's use*



2015 BCNYS Accessibility and Usability
for Commercial Buildings

148

Point-of-Sale and Service Counters

1109.12.3

Point of sale and service counters.

Where counters are provided for sales or distribution of goods or services, at least one of each type provided shall be accessible. Where such counters are dispersed throughout the building or facility, the accessible counters shall also be dispersed.



Sales & Service Counters ANSI A117.1 904

- Access to the full depth of sales counter (*includes service windows as well*)
- Parallel or forward approach (36 inch height maximum)
- Requirements apply whether or not cash register provided
- Security glazing – voice communication



2015 BCNYS Accessibility and Usability
for Commercial Buildings

Self Service Shelving and Dispensing Devices – ANSI A117.1 904.5.1

- Reach ranges shall comply with 308
- Applies to dispensing devices for condiments, tableware, dishware, food and beverages.



2015 BCNYS Accessibility and Usability for Commercial Buildings

151

2015 BCNYS Storage

1109.9 Storage.

Where fixed or built-in storage elements such as cabinets, coat hooks, shelves, medicine cabinets, lockers, closets and drawers are provided in required *accessible* spaces, at least 5 percent, but not less than one of each type shall be *accessible*.

1109.9.1 Equity.

Accessible facilities and spaces shall be provided with the same storage elements as provided in the similar non-accessible facilities and spaces.

Revised to allow for all types of storage elements to be utilized

2015 BCNYS Accessibility and Usability for Commercial Buildings

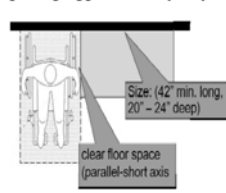
152

Dressing, Fitting and Locker Rooms

BCNYS 1109.12.1 Dressing, fitting and locker rooms.

Where dressing rooms, fitting rooms, or locker rooms are provided, at least 5 percent, but not less than one, of each type of use in each cluster provided shall be accessible.

[changing] Benches (903)



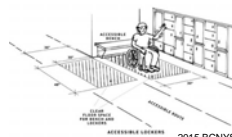
Access to at least 5% of each type of use in each cluster



ANSI A117.1 903 Benches in Locker Rooms, Fitting Rooms, & Dressing Rooms

Clear Floor space is no longer required to be at the end of the bench. A parallel approach to the front of the bench is now permitted and a new exception addresses bench heights for children.

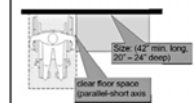
Note that 2010 ADA requires the clear floor space positioned parallel to the short axis of the bench. See below:



2015 BCNYS Accessibility and Usability for Commercial Buildings

154

[changing] Benches (903)



2009 A117.1